



Article

# Anomalous Angiogenesis in Retina

Rocío Vega , Manuel Carretero and Luis L Bonilla \*

Department of Mathematics, Gregorio Millán Institute, Fluid Dynamics, Nanoscience and Industrial Mathematics, Universidad Carlos III de Madrid, 28911 Leganés, Spain; rvega@ing.uc3m.es (R.V.); manuel.carretero@uc3m.es (M.C.)

\* Correspondence: bonilla@ing.uc3m.es

**Abstract:** Age-related macular degeneration (AMD) may cause severe loss of vision or blindness, particularly in elderly people. Exudative AMD is characterized by the angiogenesis of blood vessels growing from underneath the macula, crossing the blood–retina barrier (which comprises Bruch’s membrane (BM) and the retinal pigmentation epithelium (RPE)), leaking blood and fluid into the retina and knocking off photoreceptors. Here, we simulate a computational model of angiogenesis from the choroid blood vessels via a cellular Potts model, as well as BM, RPE cells, drusen deposits and photoreceptors. Our results indicate that improving AMD may require fixing the impaired lateral adhesion between RPE cells and with BM, as well as diminishing Vessel Endothelial Growth Factor (VEGF) and Jagged proteins that affect the Notch signaling pathway. Our numerical simulations suggest that anti-VEGF and anti-Jagged therapies could temporarily halt exudative AMD while addressing impaired cellular adhesion, which could be more effective over a longer time-span.

**Keywords:** cellular potts model; exudative age-related macular degeneration; angiogenesis; notch signaling pathway; systems biology



**Citation:** Vega, R.; Carretero, M.; Bonilla, L.L. Anomalous Angiogenesis in Retina. *Biomedicines* **2021**, *9*, 224. <https://doi.org/10.3390/biomedicines9020224>

Academic Editor: Nadia Alfaidy

Received: 23 December 2020

Accepted: 14 February 2021

Published: 22 February 2021

**Publisher’s Note:** MDPI stays neutral with regard to jurisdictional claims in published maps and institutional affiliations.



**Copyright:** © 2021 by the authors. Licensee MDPI, Basel, Switzerland. This article is an open access article distributed under the terms and conditions of the Creative Commons Attribution (CC BY) license (<https://creativecommons.org/licenses/by/4.0/>).

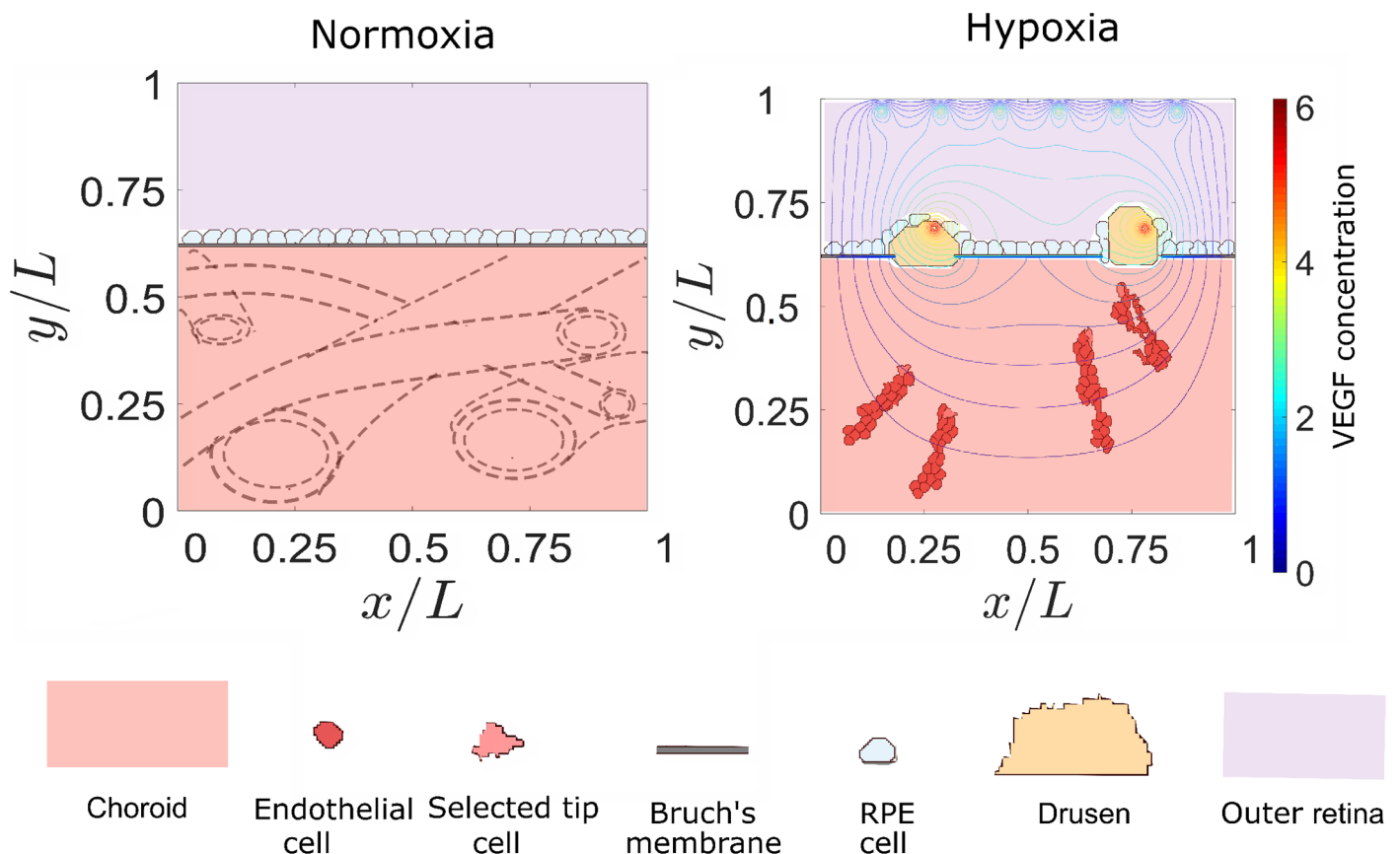
## 1. Introduction

Among diseases that cause disability but not substantial mortality, age-related macular degeneration (AMD) may cause severe loss of vision or blindness in many people, particularly the elderly. Wong et al. have projected that 196 million people will be affected by age-related macular degeneration in 2020, increasing to 288 million by 2040 [1], which is likely an underestimation [2]. Exudative or wet AMD is characterized by a breakdown of the blood–retina barrier: blood vessels grow from underneath the macula and leak blood and fluid into the retina [3,4]. These blood vessels and their leaking may form scars, leading to permanent loss of central vision. Diagnosis of wet AMD [4] has improved with important non-invasive techniques such as optical coherence tomography [5,6] or, quite recently, transscleral optical phase imaging [7]. The retina contains many membranes and tissue layers that make imaging cells and understanding pathologies difficult. The growth of blood vessels in the retina is well-documented in pathological cases, such as wet AMD, and in normal cases, such as retinal vascularization in fetuses and newborns [8–11]. In these cases, blood vessels grow out of a primary vessel, which is a complex multiscale process called angiogenesis. Retinal angiogenesis adds a complex geometry to the process.

Normal angiogenesis determines organ growth and regeneration, wound healing, repair of tissues, etc. [8–16]. In these processes, tissue inflammation may occur, and cells may experience hypoxia. Then, they may activate signaling pathways leading to the secretion of pro-angiogenic proteins, such as Vessel Endothelial Growth Factor (VEGF). VEGF diffuses in the tissue, binds to the extracellular matrix (ECM) components and forms a spatial concentration gradient in the direction of hypoxia. In retinal vascularization, astrocyte neurons issuing from the optical nerve form a network and locally secreted VEGF [9–11]. VEGF molecules that reach an existing blood vessel diminish adhesion of its cells and activate the tip cell phenotype in endothelial cells (ECs) of the vessel through the

Notch signaling pathway. Tip cells grow filopodia with many VEGF receptors, pull the other ECs, open a pathway in the ECM, lead the new sprouts, and migrate in the direction of increasing VEGF concentration [17]. The branching of new sprouts occurs as a result of signaling and mechanical cues between neighboring ECs [18–21]. ECs in growing sprouts alter their shape to form a lumen connected to the initial vessel that is capable of carrying blood [22]. Sprouts meet and merge in a process called anastomosis to improve blood circulation inside the new vessels. Poorly perfused vessels may become thinner and their ECs, in a process that inverts angiogenesis, may retract to neighboring vessels, leading to a more robust blood circulation [23]. Thus, the vascular plexus remodels into a highly organized and hierarchical network of larger vessels ramifying into smaller ones [24]. In normal processes of wound healing or organ growth, the cells inhibit the production of growth factors when the process is finished.

Pathological angiogenesis changes the previous picture in important ways. For example, hypoxic tumor cells produce VEGF, which induces angiogenesis, interferes with Notch signaling and promotes tumor growth [25]. In wet AMD, negative control mechanisms are breached, and angiogenic sprouts issue from choroid blood vessels, cross Bruch's membrane (BM), pass retinal pigment epithelium (RPE) cells and knock down photoreceptors, producing loss of central vision [11]. Under normal circumstances, oxygen and nutrients diffuse from the choroid vascular layer through the thin BM and the layer of RPE cells to reach photoreceptors. Inversely, RPE process photoreceptor debris, including shed photoreceptor outer segments, pass it through BM, and the debris is removed by the choriocapillaries in the choroid; see the left panel of Figure 1. With age, BM becomes thicker and a variety of factors, such as oxidative stress, immune activation, genetic constitution and local anatomy of the neural retina, RPE and BM, may affect the ability of the latter to process debris. Lipid deposits called drusen may form on different layers of BM and the RPE [26]. Calcification of BM also diminishes the adhesion of RPE cells. Damage to RPE cells and their loss is compensated by the same wound-healing mechanism as in other epithelial cells. However, this process is impaired in AMD tissues [26]. Drusen deposits thicken BM and create a barrier that interferes with the normal situation. They decrease the diffusion of oxygen and nutrients from the choroid to the photoreceptors and the RPE in one direction, and decrease the removal of debris by the choriocapillaries into the other direction [27]. While this dry AMD produces some loss of vision (severe in the case of geographical atrophy of RPE [28]), it also leads to relative hypoxia within retinal layers. In response, the RPE secrete proangiogenic factors, such as VEGF and vasculogenic and inflammatory cytokines, that go into the choroidal space. This may start angiogenesis, thereby producing choroidal neovascularization (CNV); see the right panel of Figure 1. CNV vessel sprouts may penetrate BM and remain underneath the RPE layer (type 1 or 'occult' CNV), or surpass it and go through the outer retina (type 2 or 'classic' CNV). In the latter condition, sprouts may leak blood and fluid, which eventually produces scars and the death of photoreceptors, which signals the wet phase of AMD [28]; see also sketch in Figure 1 of [27]. During AMD, RPE cells degenerate, losing their characteristic epithelial morphology and function, enabling their migration into the retina and the sub-RPE space [29]. These cells may have undergone a reversible Epithelial-to-Mesenchymal Transition (EMT), detached themselves from the RPE and migrated to survive the adverse environment during AMD [30]. The loss of RPE cells due to the EMT and the similar transformation of endothelial cells to a motile phenotype during angiogenesis are very important factors in wet AMD [30]. In this disease, the process of RPE detachment and dissociation is crucial, and the initiation of the EMT requires the disruption of RPE cell–cell contact [31].



**Figure 1.** Sketch of a two-dimensional section of the macula, including choroid and choroid blood vessels, Bruch's membrane, retinal pigment cells, drusen, outer retina, epithelial cells, and tip cells. Left panel: normal supply of oxygen. Right panel: hypoxia and incipient choroid neovascularization.

We have just sketched the complexity of the retinal structures involved in AMD. While there are many mathematical and computational models describing the development of retinal vascularization, less work has been devoted to such models for AMD; see, e.g., [32]. Early modeling research on CNV focuses on relating the blood flow in the CNV to that in the underlying choriocapillaries in an appropriate two-dimensional (2D) geometry [33]. Darcy's law for a porous medium is used to model flow in choriocapillaries and in blood vessels that connect them to the CNV. Changes in the flow in the connecting vessels strongly influence the flow through the CNV and control of the connecting vessels may be used to block the flow in the CNV, with beneficial effects for wet AMD [33]. A similar idea, but using the incompressible Navier–Stokes equation, has been recently used to study drug delivery across the blood–retina barrier [34]. These studies consider fixed choroid and CNV networks, ignoring the development and progression of the latter. To account for the formation and expansion of the CNV, Shirinifard et al. have used a 3D cellular Potts model of the choroid and outer retina [35]. They conclude that failures in cellular adhesion determine the formation and expansion of CNV. Cells include tip and stalk ECs, cells at RPE and BM, photoreceptor cell outer and inner segments, ECM and fluid regions. Continuum equations model media surrounding cells, VEGF, oxygen and matrix metalloproteinases and are coupled to the Potts Hamiltonian, which is updated using a modified Metropolis algorithm. EC chemotaxis and haptotaxis are implemented. Stalk cells may increase their volume and proliferate; BM cells may decrease their volume and die. Different cells have different adhesion parameters. The model does not include blood flow, signaling pathways and change in EC phenotype, or drusen [35]. Here, we use a 2D Potts model that includes EC Notch signaling, chemotaxis, haptotaxis and durotaxis [21] to ascertain the influence of these mechanisms on AMD. We consider the simple geometry sketched in Figure 1: a

square domain in which BM separates the choroid crisscrossed by blood vessels, which may issue angiogenic sprouts, from RPE cells, eventual drusen and a subretinal space on top of which there are photoreceptors. The choroid vessels may issue sprouts at randomly chosen points, provided the VEGF concentration surpasses some threshold in those points. The growth of drusen above RPE cells turns on VEGF sources that attract the sprouts issued from the choroid vessels to them. Once ECs have crossed BM, they either form subRPE type 1 CNV or subretinal type 2 CNV. Type 1 CNV occurs if the sprouts form a network between BM and the RPE cells, whereas type 2 CNV occurs if the sprouts succeed in moving beyond the RPE layer and towards the VEGF-emitting photoreceptors. We find that adhesion between RPE cells, between ECs, and between RPE cells and BM decides whether angiogenic sprouts succeed in invading the subRPE space or the subretinal space, thereby producing type 1 or 2 CNV, respectively. We study how local VEGF gradients and Notch signaling proteins affect CNV in the presence of drusen and defects in BM. Notch signaling dynamics confirms that CNV is an example of pathological angiogenesis with thin and leaky capillary sprouts [21].

## 2. Materials and Methods

To describe angiogenesis in the retina, we need a model able to describe cellular processes at cellular and subcellular sizes. The cellular Potts model (CPM) [36] is particularly useful at these scales, as it incorporates constraints for the volume, area or length of the cells, as well as adhesion between cells or with the extracellular matrix (haptotaxis), in a natural way [35,36]. Attraction due to chemical gradients (chemotaxis) [37] or to substrate stiffness gradients (durotaxis) [38] has also been added to CPMs. Strains in the cells together with the unsupervised K-means algorithm can be used to implement branching of growing sprouts [21]. The phenotype of leading tip cells or follower stalk cells is decided by the Notch signaling pathway, and the corresponding dynamics [39] can also be incorporated to the CPM [21].

### 2.1. Cellular Potts Model

In our simulations, we consider different entities: the choroid, Bruch's membrane, Retinal Pigmented Epithelium cells, endothelial cells, extracellular matrix, photoreceptors, and drusen. We ignore the outer segments of photoreceptors and their dynamics. Thus, there is a free space between the RPE layer and the photoreceptors. We fix the number of drusen and of RPE cells, whereas the number of ECs varies. Different cells comprise a number of elementary squares or pixels in a square domain  $\Omega$  of side  $L$  (in numerical simulations,  $L = 400 \mu\text{m}$ ). See Supplementary Material: Text for the precise labels (or spins) of pixels belonging to different cells. For each pixel configuration, we define the Hamiltonian

$$H = \sum_{\sigma} \rho_{area} \left( \frac{a_{\sigma} - A_{\sigma}}{A_{\sigma}} \right)^2 + \sum_{\sigma} \rho_{perimeter} \left( \frac{p_{\sigma} - P_{\sigma}}{P_{\sigma}} \right)^2 + \sum_{\sigma} \rho_{length} \left( \frac{l_{\sigma} - L_{\sigma}}{L_{\sigma}} \right)^2 + \sum_{x, x' \in \Omega} \rho_{adh}^{\Sigma_{\sigma}, \Sigma_{\sigma'}} (1 - \delta_{\sigma, \sigma'}) + H_{durot} + H_{chem} \quad (1)$$

where the three first terms are sums over cells. These terms impel them to reach target areas, perimeters and lengths with strengths given by their Potts parameters  $\rho_{area}$ ,  $\rho_{perimeter}$  and  $\rho_{length}$ . Numerical values of target areas  $A_{\sigma}$ , perimeters  $P_{\sigma}$ , and lengths  $L_{\sigma}$  can be found in Table 1. The fourth term (haptotaxis) sums overall pixels and accounts for adhesion between elements, which is zero for pixels belonging to the same cell, and calibrates the repulsion between pixels belonging to different cells (adhesion is stronger for smaller repulsion), depending on the value of the corresponding Potts parameter  $\rho_{adh}^{\Sigma_{\sigma}, \Sigma_{\sigma'}}$ . The fifth and sixth terms correspond to durotaxis and chemotaxis, impelling cells to move toward gradients of stiffness and VEGF concentration, respectively [21]; see also Supplementary Material: Text. At each Monte Carlo time step (MCTS)  $t$ , we randomly select a pixel  $x$  belonging to object  $\Sigma_{\sigma}$  and propose to copy its spin  $\sigma(x)$  to a neighboring (target) pixel  $x'$  that does not belong to  $\Sigma_{\sigma(x)}$ . The proposed change in the spin configuration (spin flip)

changes the configuration energy by an amount  $\Delta H|_{\sigma(x) \rightarrow \sigma(x')}$ , and it is accepted with probability  $P(\sigma(x) \rightarrow \sigma(x'))(t) = \{e^{-\Delta H|_{\sigma(x) \rightarrow \sigma(x')}/T}$  if  $\Delta H > 0$ , and 1 if  $\Delta H \leq 0\}$  (Metropolis algorithm) [36,38]. BM does not change throughout the simulation. Thus, Monte Carlo (MC) attempts involving  $x \in \Sigma_{BM}$  or  $x' \in \Sigma_{BM}$  are discarded. An appropriate temperature for our simulations is  $T = 4$ .

**Table 1.** Target areas, perimeters and length.

Param.	$A_{EC}$	$P_{EC}$	$L_{EC}$	$A_{RPE}$	$P_{RPE}$	$A_{druse}$	$P_{druse}$
Value	$78 \mu\text{m}^2$	$50 \mu\text{m}$	$60 \mu\text{m}$	$169 \mu\text{m}^2$	$52 \mu\text{m}$	$2827 \mu\text{m}^2$	$188 \mu\text{m}$

### 2.2. Continuum Fields at the Extracellular Scale

VEGF concentration.

The VEGF concentration  $C(x, y, t)$  obeys the following initial-boundary value problem [37]

$$\frac{\partial C}{\partial t} = D_f \left( \frac{\delta^2 C}{\delta x^2} + \frac{\delta^2 C}{\delta y^2} \right) - \nu C - G(x, y, C) + A(x, y), \quad (x, y) \in \Omega, \quad t > 0, \quad (2)$$

$$C(0, y, t) = 0 = C(L, y, t), \quad C(x, 0, t) = 0 = C(x, L, t), \quad (x, y) \in \delta\Omega, \quad t > 0, \quad (3)$$

$$n \cdot \nabla C(x, y, t) = 0, \quad (x, y) \in x_h \times \{y_d, y_u\} \cup \{x_{1l}, x_{1r}, x_{2l}, x_{2r}\} \times y_v, \quad t > 0 \quad (4)$$

$$C(x, y, 0) = 0, \quad (x, y) \in \Omega. \quad (5)$$

where  $y_d = 246 \mu\text{m}$ ,  $y_u = 248 \mu\text{m}$ ,  $y_v = [y_d, y_u]$ ,  $x_{1l} = 72 \mu\text{m}$ ,  $x_{1r} = 128 \mu\text{m}$ ,  $x_{2l} = 272 \mu\text{m}$ ,  $x_{2r} = 328 \mu\text{m}$ ,  $x_h = [0 \mu\text{m}, x_{1l}] \cup [x_{1r}, x_{2l}] \cup [x_{2r}, 400 \mu\text{m}]$  are the points in which BM is located with the corresponding holes. In Equation (2), the amount of VEGF bound by an EC per unit time is

$$G(x, y, C) = \begin{cases} \Gamma, & \text{if } \Gamma \leq \nu C(x, y) \text{ and } (x, y) \in \Sigma_{EC}, \\ \nu C, & \text{if } 0 \leq \nu C(x, y) < \Gamma \text{ and } (x, y) \in \Sigma_{EC}, \\ 0, & \text{if } (x, y) \notin \Sigma_{EC}, \end{cases} \quad (6)$$

where  $\nu = 1 \text{ h}^{-1}$ ,  $D_f = 0.036 \text{ mm}^2/\text{h}$ ,  $\nu = 0.6498/\text{h}$ ,  $S = 5 \times 10^{-7} \text{ pg}/\mu\text{m}^2$  (corresponding to  $50 \text{ ng}/\text{mL}$  for a sample with a  $10 \mu\text{m}$  height [40,41]), and  $\Gamma = 0.02 \text{ pg}/(\mu\text{m}^2 \text{ h})$  is the maximum amount of VEGF that could be consumed by a cell per hour [21,37,42]. In Equation (2), the VEGF source due to 320 the hypoxia caused by drusen and photoreceptors is

$$A(x, y) = \sum_{i=1}^{N_{drusen}} \alpha_i \exp \left\{ - \left[ \frac{(x-x^{d_i})^2}{2\sigma_x^2} + \frac{(y-y^{d_i})^2}{2\sigma_y^2} \right] \right\} + \sum_{i=1}^{N_{photo}} \alpha_i \exp \left\{ - \left[ \frac{(x-x^{p_i})^2}{2\sigma_x^2} + \frac{(y-y^{p_i})^2}{2\sigma_y^2} \right] \right\} \quad (7)$$

Here, the coefficient  $\alpha_i$  is the amplitude,  $(x^{d_i}, y^{d_i})$  or  $(x^{p_i}, y^{p_i})$  is the center and  $\sigma_x, \sigma_y$  are the x and y spreads of the blob,  $\sigma_x = \sigma_y = 7$ . After a sprout arrives nearby a drusen, the surrounding region ceases to be hypoxic; therefore, the corresponding Gaussian of the first summation disappears from  $A(x, y)$ .

### Durotaxis

ECs generate mechanical strains in the substrate, perceive a stiffening of the substrate along the strain orientation, and extend preferentially on the stiffer substrate. The simulated ECs spread out on stiff matrices, contract on soft matrices, and become elongated on matrices of intermediate stiffness [38]. Strains enter the durotaxis term in the Hamiltonian (1), cf Supplementary Material: Text and [21,38].

### 2.3. Signaling Processes and Cell Dynamics

A crucial distinction between ECs is that between tip and stalk phenotypes. Tip cells are highly motile, do not proliferate, act as leaders of angiogenic sprouts, sense chemical gradients and advance towards VEGF sources produced by hypoxic cells. Stalk cells proliferate and are less motile, often following tip cells. The tip-stalk cell phenotype is selected by the Notch signaling communication pathway, which is quantified by model differential equations explained in Supplementary Material: Text. The unknowns in these equations are the Notch, Delta-4, and Jagged-1 proteins in a cell, and the number Notch intracellular domain and VEGF molecules and of VEGF receptors in the cell. The phenotype of a cell is decided by whether the number of its VEGF molecules surpasses appropriate thresholds [39]. See the precise criterion in [21] and in Supplementary Material: Text. This means that stalk cells may become tip cells and vice versa. There are also hybrid stalk-tip cells that can lead thinner angiogenic sprouts [21,39]. Advancing blood vessels may undergo branching, thereby creating new sprouts, and fuse with existing vessels (anastomosis). The details are explained in [21] and Supplementary Material: Text.

### 2.4. Retinal Configuration and Onset of Angiogenesis

We consider a simplified configuration for the space (measuring about  $L = 400 \mu\text{m}$ ) between the choroid and the photoreceptors, as sketched in Figure 1. The choroid contains several layers comprising blood vessels of different sizes, including narrow capillaries. In a 2D section, choriocapillaries oriented in different directions may issue angiogenic sprouts that are then attracted towards openings in BM and the RPE layer. Instead of modeling the fixed choriocapillaries (parent vessels) issuing new blood vessels, we randomly generate a fixed number of points  $N_{pv}$  that may initiate sprouts and establish an external VEGF activation threshold for the sprouts to start. The parent vessels are randomly placed at the rectangle  $0 < x < L$ ,  $0 < y < 0.3L = 120 \mu\text{m}$  and the concentration of external VEGF satisfies Equation (2). The  $2 \mu\text{m}$  wide BM is a segment placed at  $y = 246 \mu\text{m}$  [5,43] and it is followed by RPE cells with interspersed drusen, which have Gaussian sources of VEGF representing hypoxic areas. These sources placed at  $y = 249 \mu\text{m}$  are farther than  $100 \mu\text{m}$  from the choriocapillaries, which is consistent with the criterion for hypoxia to occur. New sprouts grow from the initial points only if the external VEGF concentration in them is larger than a threshold. The described CPM causes the sprouts to advance toward the drusen and they may or may not pass BM and RPE attracted by the VEGF sources at the photoreceptors.

After the CPM simulation begins, we need a criterion for RPE cells and photoreceptors to become hypoxic and issue VEGF. During the first few hundred MCTS, RPE cells and drusen grow to acquire their target size [35,44]. Once a drusen  $i$  reaches forty percent of its target size, it produces a hole in BM, and the RPE cells around it become hypoxic and start producing VEGF. The VEGF source associated with drusen  $i$  is represented by a Gaussian function centered at  $(x^{d_i}, y^{d_i})$ . This process also activates  $N_{photo}$  sources of VEGF associated with photoreceptors which are equally spaced on the  $x$  axis at  $y = 388 \mu\text{m}$ . We ignore the photoreceptors' outer segments and their dynamics. As in the case of the sources associated with drusen, these VEGF sources are represented by Gaussian functions centered at  $(x^{p_i}, y^{p_i} = 388 \mu\text{m})$  [45]. The holes divide BM into  $N_{drusen} + 1$  pieces. Once VEGF sources are activated, new sprouts can start from the parent vessels at their predetermined sites if the external VEGF concentration there surpasses the activation threshold. VEGF sources stop emitting it when they are reached by ECs.

## 3. Results

Different adhesion parameters between ECs, and between RPE and BM cells characterize haptotaxis, which, together with VEGF gradients, determine the formation and type of CNV [35]. In addition to confirming impaired lateral adhesion between BM and RPE, and between RPE cells themselves, as major drivers of CNV, we explore how adhesion between ECs, chemotaxis and Notch signaling affect CNV. We find that Notch signaling proteins

are markers of the CNV type that develops during AMD and decreasing the production of Jagged-1 may prevent type 2 CNV.

### 3.1. Impaired Adhesion

Adhesion defects modify the pattern of choroidal neovascularization in the retina [35]. The adhesion Potts parameter measures the energetic cost for cells to stay together: it is zero for pixels of the same cell and larger for pixels of different cells. The larger the Potts parameter between the pixels of different cells is, the more strongly these neighboring cells repel each other (thereby meaning there is weaker adhesion among them). Thus, impaired adhesion among cells implies that the corresponding Potts parameter has increased with respect to the normal adhesion values. We now consider the effect that modifying Potts parameters for different cell types has on the formation and type of CNV.

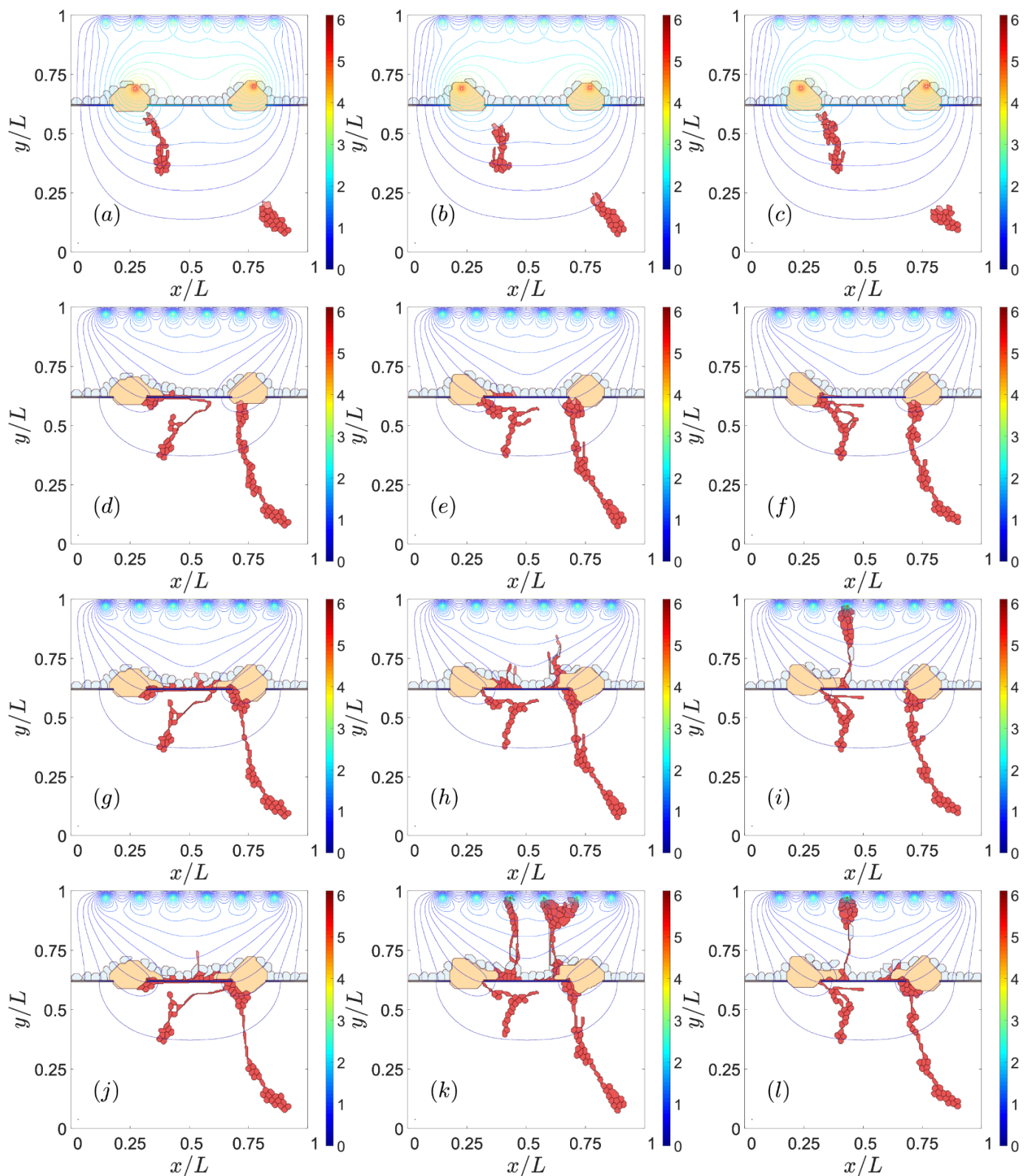
#### 3.1.1. Adhesion between RPE and BM

Reducing the adhesion between the basement membrane of the RPE and BM may enable CNV to invade the sub-RPE space [35,46]. As chemotaxis attracts vessel sprouts towards sites with a higher VEGF concentration beyond the RPE, vessels may cross this layer at sites where adhesion is weakest, e.g., near the drusen. If adhesion between RPE and BM is weak (large Potts parameter), ECs move easily in the space between them, thereby producing type 1 CNV, as observed in the left panels of Figure 2. If the Potts parameter decreases (central and right panels of Figure 2), the adhesion between RPE and BM increases. ECs then try to surpass the RPE near the drusen that have opened a hole in BM. Eventually, the sprouts reach the subretinal space, thereby producing type 2 CNV. The resulting CNV does not form a dense network of blood vessels between RPE and BM.

#### 3.1.2. RPE–RPE and EC–EC Adhesion

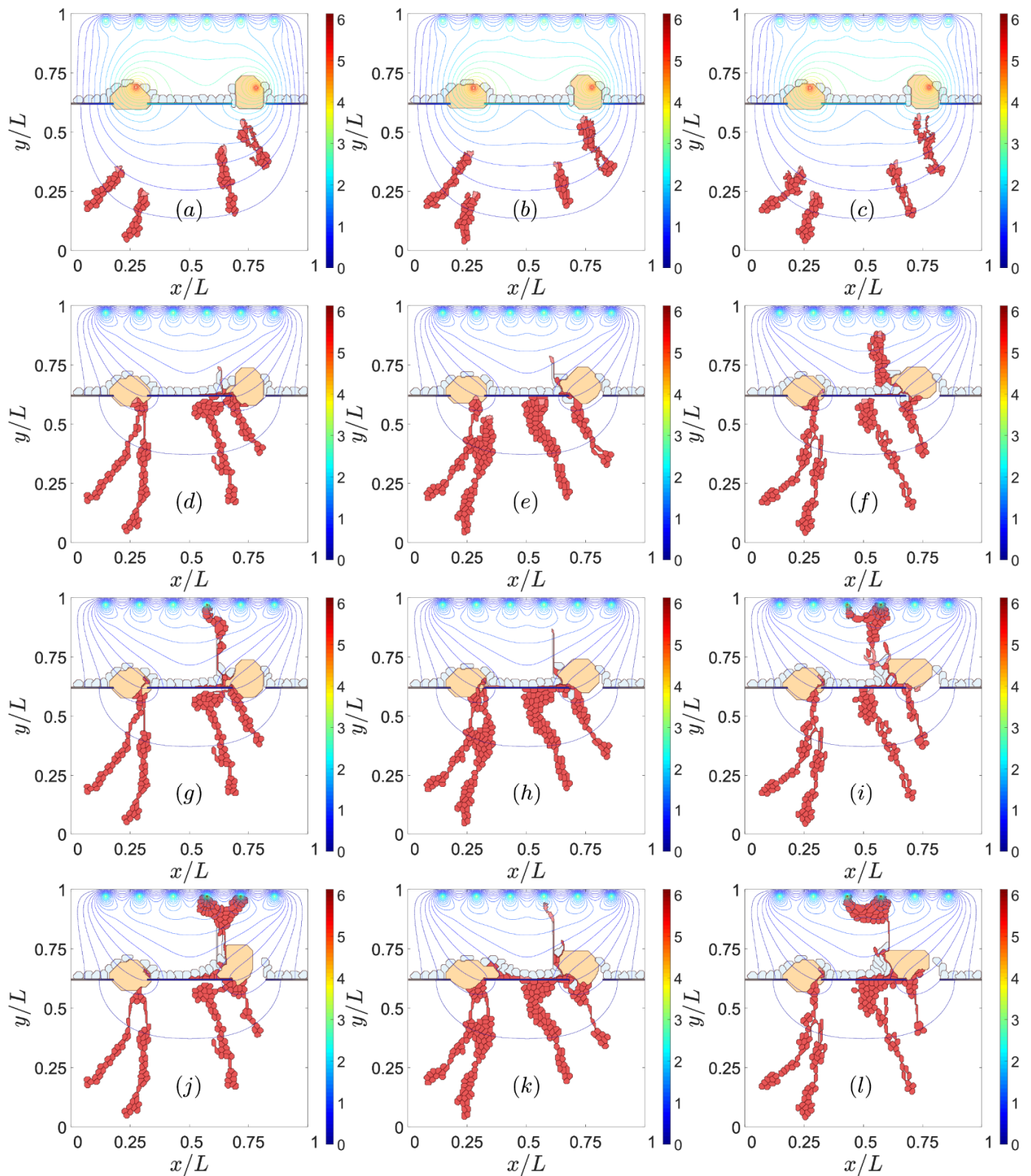
Impaired lateral adhesion between RPE cells facilitates type 2 CNV [47,48]. ECs and the sprouts they generate are able to penetrate the RPE layer effortlessly, as shown in the left column of Figure 3. Stronger adhesion between cells in RPE makes it difficult for sprouts to cross the layer, thereby favoring type 1 over type 2 CNV, as shown in the middle column of Figure 3. While adhesion between endothelial cells affects the quality of the resulting blood vessels [49], it also influences the resulting type of CNV, as shown in the middle and right columns of Figure 3. Reduced adhesion between ECs has the consequences displayed on the right column of Figure 3: ECs are able to intersperse RPE cells and drusen to change quickly from type 1 to type 2 CNV. This produces blood vessels of poorer quality. Strong EC–EC adhesion makes it difficult for the sprout to pass through RPE cells since the ECs have to disconnect from their EC neighbors to cross the RPE, as shown by the middle column of Figure 3.

To sum up, Figure 3 shows that we can favor type 1 CNV and prevent type 2 CNV by making the adhesion between cells in RPE (from left column to middle column) stronger. In addition, if the adhesion between ECs weakens, poor-quality sprouts will surpass the RPE layer and produce type 2 CNV (from middle column to right column).



**Figure 2.** Effect of impaired adhesion between retinal pigmentation epithelium (RPE) and Bruch’s membrane (BM). Type 1 choroidal neovascularization (CNV) for  $\rho_{adh}^{\Sigma\sigma, \Sigma\sigma'}$  (RPE-BM) = 30, snapshots at times: (a) 601 Monte Carlos Time Step (MCTS), (d) 1601 MCTS, (g) 4501 MCTS, (j) 9001 MCTS. Type 2 CNV for  $\rho_{adh}^{\Sigma\sigma, \Sigma\sigma'}$  (RPE-BM) = 6, snapshots at times: (b) 601 MCTS, (e) 1601 MCTS, (h) 4501 MCTS, (k) 9001. MCTS. Type 2 CNV for  $\rho_{adh}^{\Sigma\sigma, \Sigma\sigma'}$  (RPE-BM) = 0, snapshots at times: (c) 601 MCTS, (f) 1601 MCTS, (i) 4501 MCTS, (l) 9001 MCTS. We have represented the level curves of external VEGF as continuous lines.





**Figure 3.** Effect of impaired adhesion between RPE–RPE and EC–EC. Type 2 CNV for  $\rho_{adh}^{\Sigma_{\sigma}, \Sigma_{\sigma'}} (EC-EC) = 70$  and  $\rho_{adh}^{\Sigma_{\sigma}, \Sigma_{\sigma'}} (RPE \text{ cell-RPE cell}) = 90$ , snapshots at times: (a) 601 MCTS, (d) 1801 MCTS, (g) 3601 MCTS, (j) 8001 MCTS. Type 1 CNV for  $\rho_{adh}^{\Sigma_{\sigma}, \Sigma_{\sigma'}} (EC-EC) = 70$  and  $\rho_{adh}^{\Sigma_{\sigma}, \Sigma_{\sigma'}} (RPE \text{ cell-RPE cell}) = 80$ , snapshots at times: (b) 601 MCTS, (e) 1801 MCTS, (h) 3601 MCTS, (k) 8001 MCTS. Type 2 CNV for  $\rho_{adh}^{\Sigma_{\sigma}, \Sigma_{\sigma'}} (EC-EC) = 80$  and  $\rho_{adh}^{\Sigma_{\sigma}, \Sigma_{\sigma'}} (RPE \text{ cell-RPE cell}) = 80$ , snapshots at times: (c) 601 MCTS, (f) 1801 MCTS, (i) 3601 MCTS, (l) 8001 MCTS.

### 3.2. Sources of VEGF

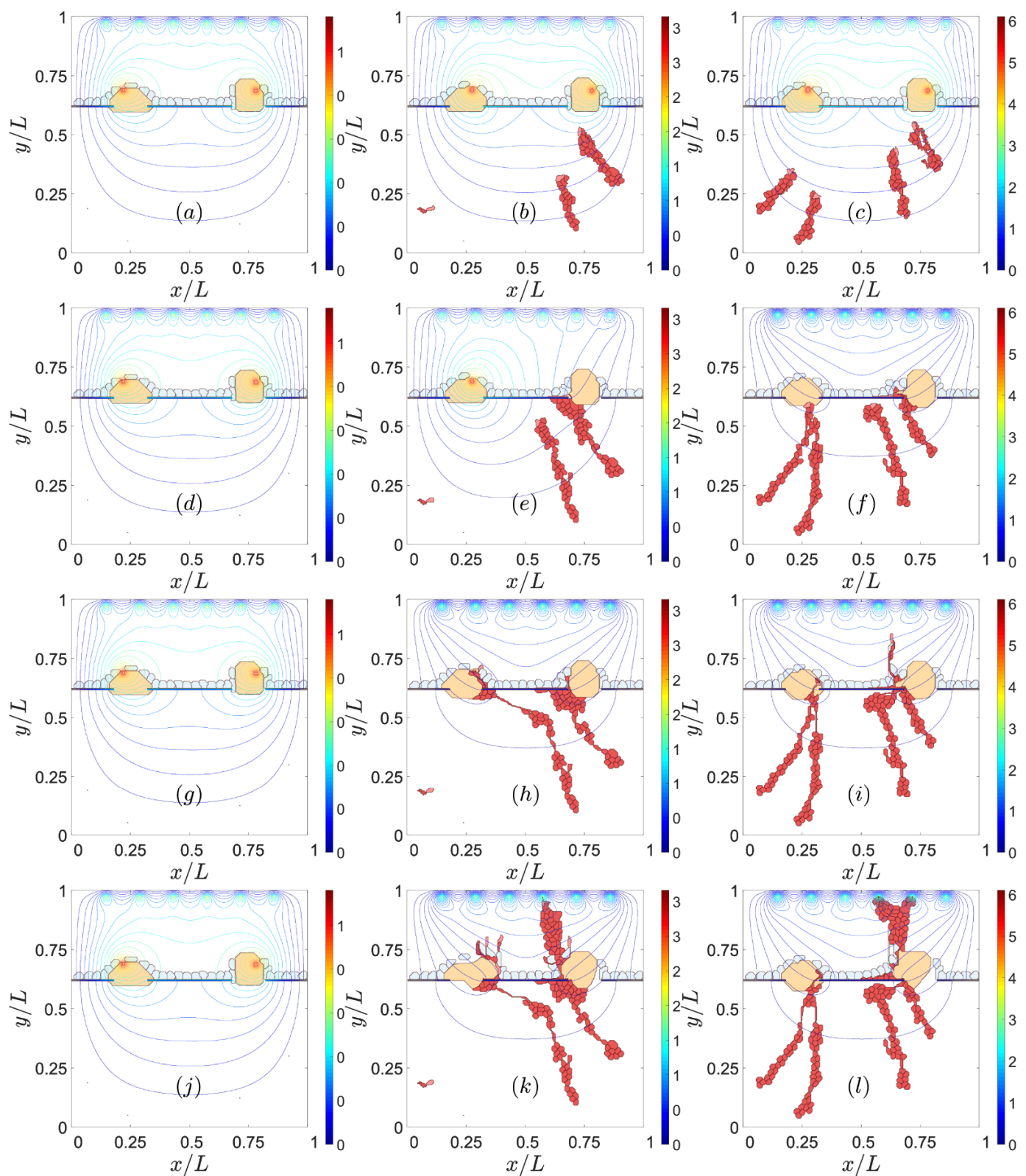
The high levels of VEGF concentration generated by sources produce large VEGF gradients that drive sprouts, and are, therefore, one chief cause of CNV [50]. This is illustrated by Figure 4. The VEGF concentration at the sources in this figure increases from the left column to the middle and right ones, whereas time, as measured by MCTS, increases from top to bottom. If the level of VEGF is too low, the ECs at the walls of the choroid vessels do not have enough VEGF to activate and start to develop a sprout, as shown on the left column of Figure 4. Medium and high levels of VEGF concentration produce CNV; see the middle and right column of Figure 4. On the middle column of this figure, only two of the four possible choroid vessels that emit sprouts have been activated, whereas all four sites have been activated on the right column of Figure 4. The subsequent larger chemotaxis causes the sprouts to reach the let drusen earlier on the right column of Figure 4 than on its middle column. The larger levels of VEGF favor the faster evolution from type 1 to type 2 CNV shown on the right column of Figure 4.

The value of the VEGF gradient at the point where the sprout tries to cross the RPE determines the sprout chances of starting type 2 CNV. The VEGF concentration throughout the domain and the parameter values are the same for Figures 5 and 6, which have a different seed of the random number generator that determines the sprout initiation points. The local VEGF gradient at the point where the sprouts are closest to the end of the RPE is larger for Figure 6 than for Figure 5. The larger chemotactic force experienced by the leading EC implies that type 2 CNV is produced in Figure 6, while only type 1 CNV is observed in Figure 5. The right columns of Figures 5 and 6 depict the number of active VEGF receptors at the times corresponding to panels on the left columns. It is clear that the number of active VEGF receptors is larger when there is successful type 2 CNV, as in Figure 6, as compared with type 1 CNV, as in Figure 5. Having the same adhesion and VEGF concentration do not determine the type of CNV. The setup of the parent vessels in the choroid may generate different CNV outcomes.

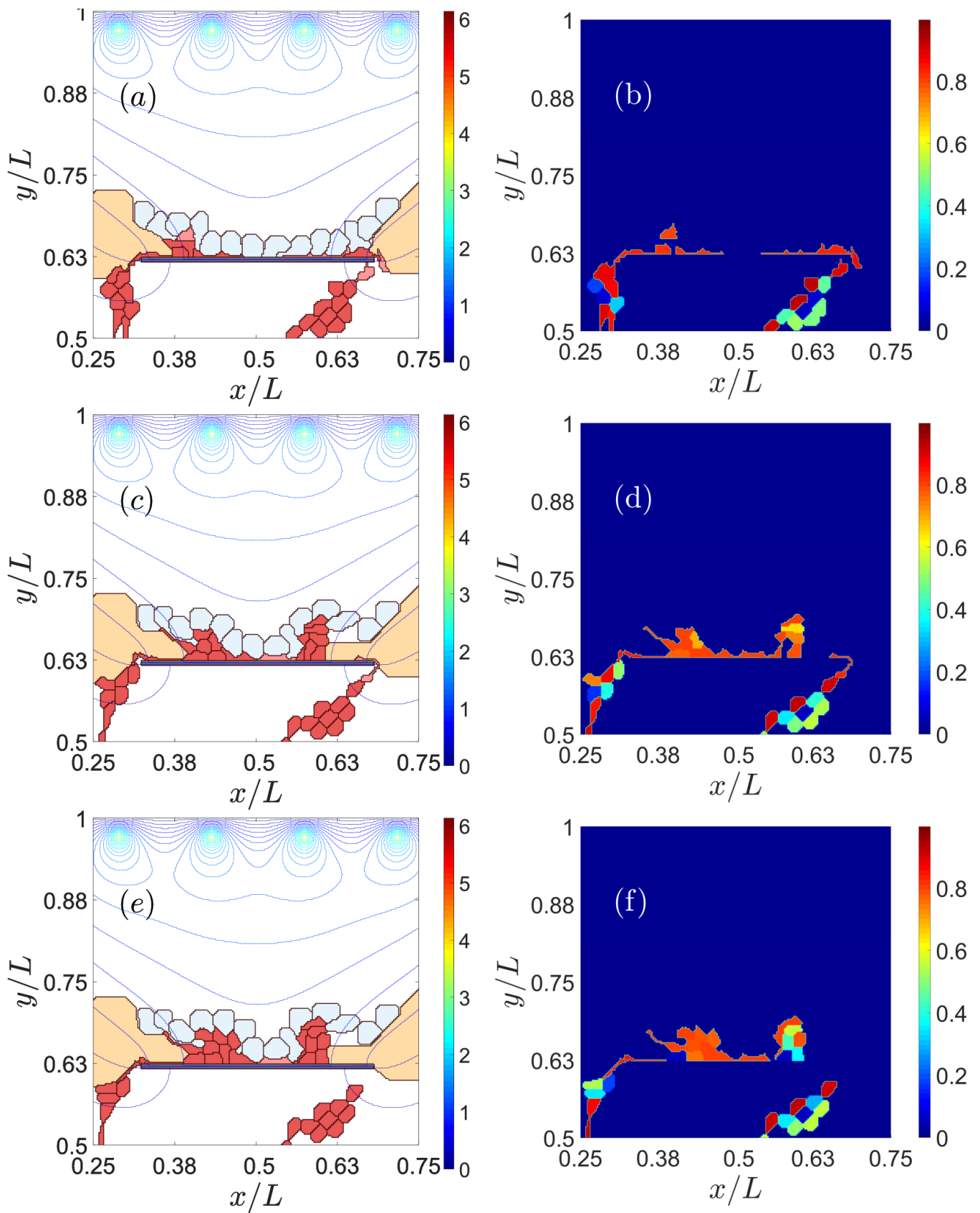
### 3.3. Notch Signaling

While Figures 5 and 6 show the effect of active VEGF receptors on retinal CNV, other proteins involved in the Notch signaling pathway may characterize the resulting CNV network.

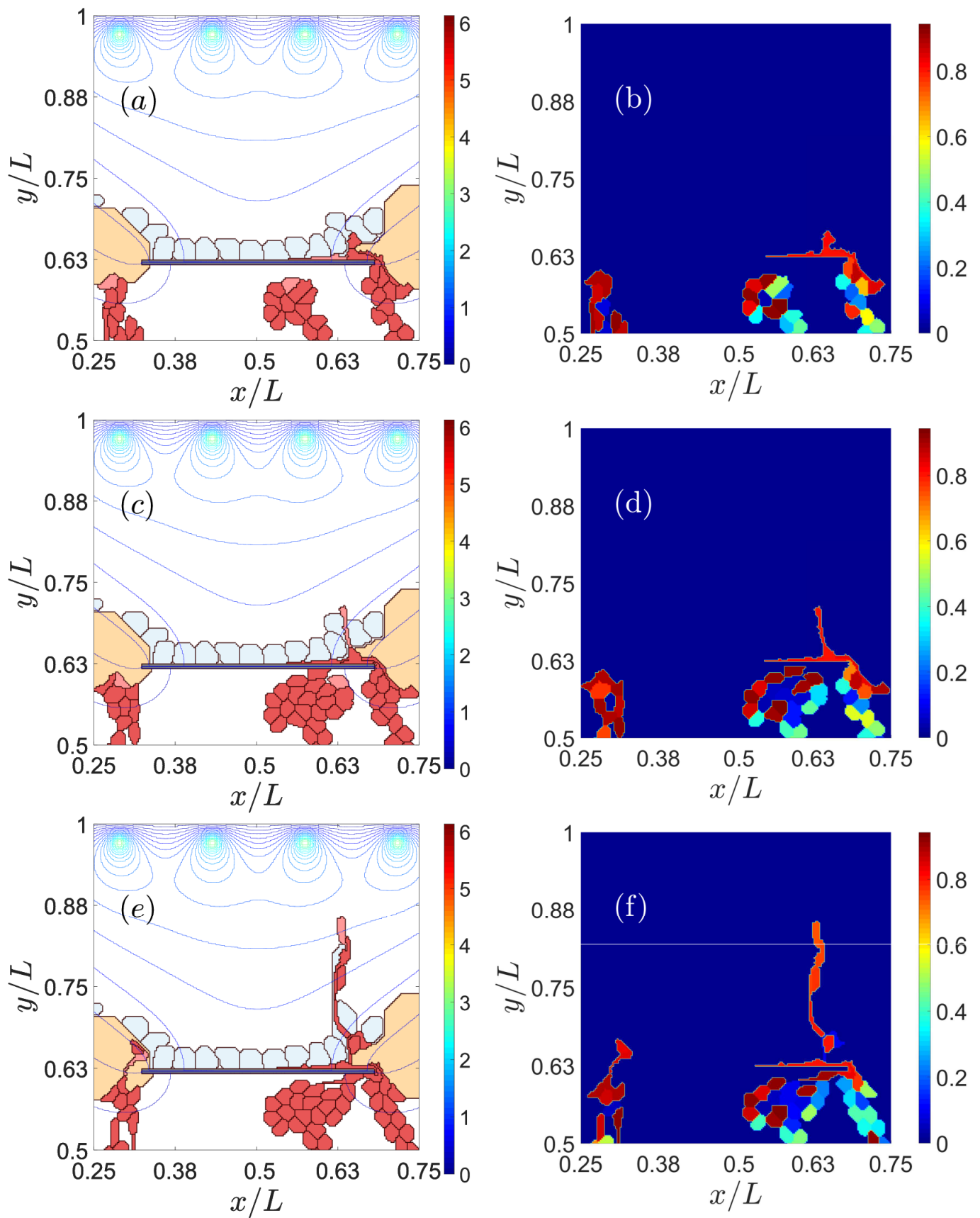
Jagged and Delta dynamics determine sprouting [21] and, therefore, also CNV. The thresholds of Delta concentration of cells change the phenotype depending on the Jagged production rate  $r_J$ . The simulations shown previously have a Jagged production rate,  $r_J=2000$ , and a Delta production rate,  $r_D=1000$ . The chosen values correspond to pathological angiogenesis [21], which is the most similar scenario to type 2 CNV. Figures 7 and 8 show the effect of decreasing  $r_J$  in the left column and increasing  $r_D$  in the right column from the reference simulation placed in the middle of the figures. The reference simulation in Figure 7 is the one corresponding to the middle column in Figure 2. The reference simulation in Figure 8 is the one corresponding to the right column in Figure 3. In both Figures 7 and 8, reducing the Jagged production rate, left column, favors type 1 over type 2 CNV and makes the blood vessels thicker than the ones in the middle column. However, the increase in the Delta production rate does not prevent type 2 CNV. We also observe that the resulting blood vessels are thinner and worse organized than the ones in the middle column.



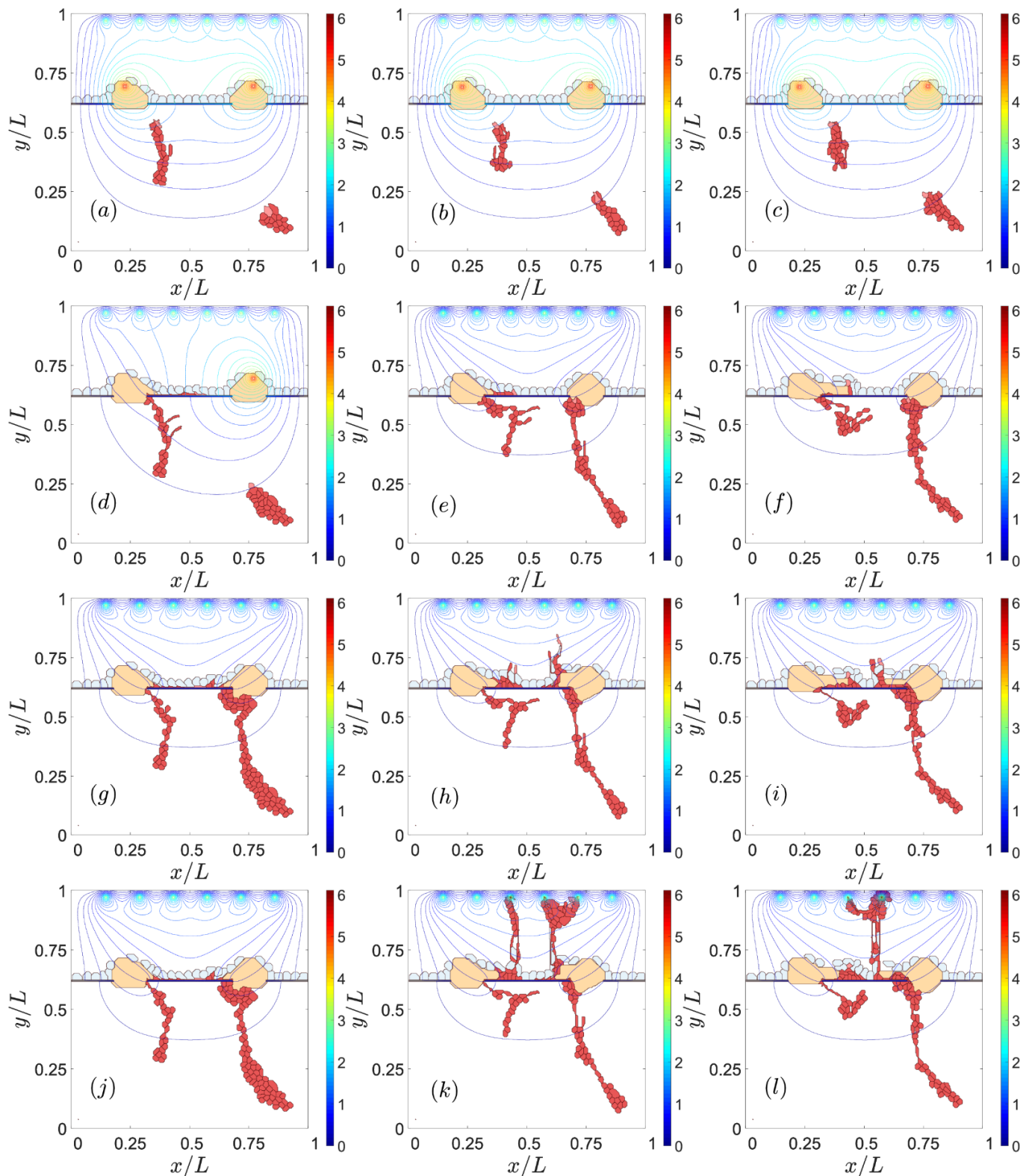
**Figure 4.** Effect of the VEGF concentration at the sources. For  $\alpha i = 4.01 \times 10^{-4} = 0.000401$ , snapshots at times: (a) 601 MCTS, (d) 1201 MCTS, (g) 3001 MCTS, (j) 5201 MCTS. For  $\alpha i = 1.203 \times 10^{-3} = 0.001203$ , snapshots at times: (b) 601 MCTS, (e) 1201 MCTS, (h) 3001 MCTS, (k) 5201 MCTS. For  $\alpha i = 2.005 \times 10^{-3} = 0.002005$ , snapshots at times: (c) 601 MCTS, (f) 1201 MCTS, (i) 3001 MCTS, (l) 5201 MCTS.



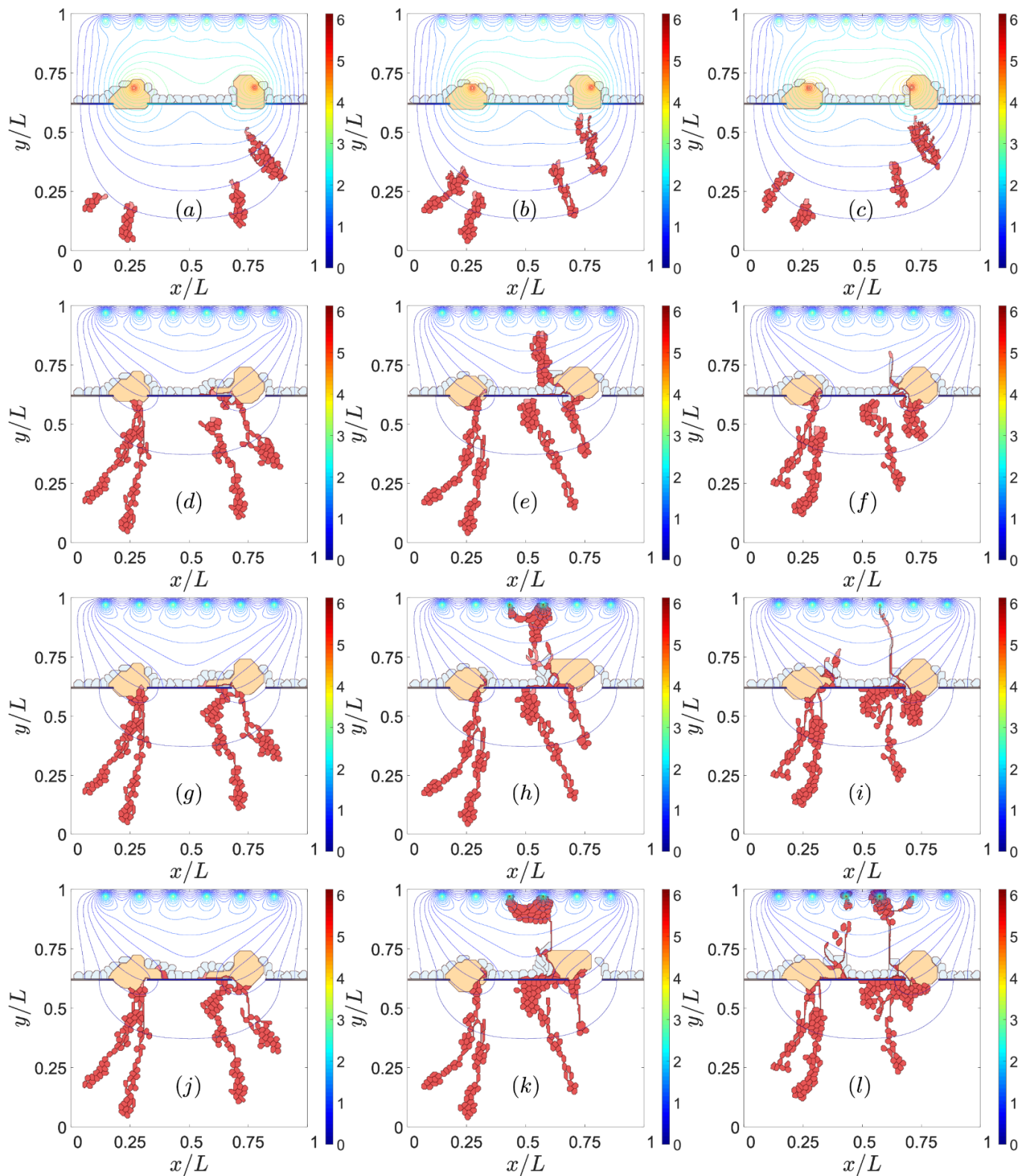
**Figure 5.** Type 1 CNV due to the lack of VEGF in the point where the tip cell of the sprout tries to cross the RPE (left column: (a), (c), (e)). Amount of VEGF receptors of ECs (right column: (b), (d), (f)). Snapshots at times: (a), (b) 1501 MCTS, (c), (d) 4501 MCTS, (e), (f) 9001 MCTS.



**Figure 6.** Type 2 CNV favored by the point where the sprout cross the RPE (left column: (a), (c), (e)). Amount of VEGF receptors of ECs (right column: (b), (d), (f)). Snapshots at times: (a), (b) 1201 MCTS, (c), (d) 1501 MCTS, (e), (f) 3001 MCTS.



**Figure 7.** Effect of Jagged and Delta production on CNV. Type 1 CNV for  $r_J = 500$  molec/h,  $r_D = 1000$  molec/h, snapshots at times: (a) 601 MCTS, (d) 1601 MCTS, (g) 4501 MCTS, (j) 9001 MCTS. Type 2 CNV (reference simulation) for  $r_J = 2000$  molec/h,  $r_D = 1000$  molec/h, snapshots at times: (b) 601 MCTS, (e) 1601 MCTS, (h) 4501 MCTS, (k) 9001 MCTS. Type 2 CNV for  $r_J = 2000$  molec/h,  $r_D = 7500$  molec/h, snapshots at times: (c) 601 MCTS, (f) 1601 MCTS, (i) 4501 MCTS, (l) 9001 MCTS. Left column extracted from Supplementary Material: Video S1. Middle column extracted from Supplementary Material: Video S2.



**Figure 8.** Effect of Jagged and Delta production on CNV. Type 1 CNV for  $r_J = 500$  molec/h,  $r_D = 1000$  molec/h, snapshots at times: (a) 601 MCTS, (d) 1801 MCTS, (g) 3601 MCTS, (j) 8001 MCTS. Type 2 CNV (reference simulation) for  $r_J = 2000$  molec/h,  $r_D = 1000$  molec/h, snapshots at times: (b) 601 MCTS, (e) 1801 MCTS, (h) 3601 MCTS, (k) 8001 MCTS. Type 2 CNV for  $r_J = 2000$  molec/h,  $r_D = 7500$  molec/h, snapshots at times: (c) 601 MCTS, (f) 1801 MCTS, (i) 3601 MCTS, (l) 8001 MCTS.

#### 4. Discussion

The mathematical model of angiogenesis in the retina, presented here, illustrates the relative importance of mechanical, chemical and cellular cues to study AMD. When Bruch's membrane deteriorates, the transport of oxygen, nutrients and debris across it become impaired and drusen deposits appear, which displace retinal pigment epithelial cells. In our model, the drusen deposits further deteriorate BM and affect the RPE cells. The latter may undergo changes in their adhesion properties, experience hypoxia and become local sources of VEGF (we do not distinguish different varieties of VEGF here). The extra VEGF reaches the choroid vessels, which may issue sprouts led by tip endothelial cells if the local VEGF concentration surpasses a threshold. These sprouts form the choroidal neovascularization, whose type depends on the impaired adhesion between BM and RPE and between the RPE cells themselves. Notch signaling decides the EC phenotype, and alterations thereof strongly influence CNV type and configuration. In particular, overexpression of Jagged, as shown by a large production, yields high proliferation of stalk ECs and thin vessels led by hybrid-type tip cells. These leaky vessels could be important in exudative AMD.

Let us now examine in some detail the roles of adhesion defects and Notch signaling in CNV. Impaired adhesion between the basement membrane of the RPE and BM allows the cells to move easily in this space, which may produce type 1 CNV. If the adhesion between RPE and BM is strong, vessel sprouts may not be able to move between them, which impedes type 1 CNV. Our simulations show that a reduced lateral adhesion between RPE cells makes it easier for ECs to cross the RPE to the subretinal space, thereby producing type 2 CNV. Even if the impaired adhesion between BM and RPE allows the formation of type 1 CNV, weaker lateral adhesion between RPE cells may facilitate vessel sprout crossing of the RPE layer. Then, the CNV changes from type 1 to type 2.

Drusen deposits pinpoint the deterioration of the RPE and BM, which are the hallmarks of dry AMD and may produce exudative (wet) AMD. In our model, extra sources of VEGF appear near drusen and trigger angiogenesis. Large VEGF gradients result in and may cause CNV. While a low level of VEGF at the walls of the choroid vessels does not activate ECs that start a sprout, medium and high VEGF levels produce CNV, and the number of sprouts that are activated depends on these levels. The VEGF concentration is not only related to CNV start, but also to its type. Under the same parameter values and conditions, the value of the VEGF gradient at the point where the sprout tries to cross the RPE determines the sprout's chances of starting type 2 CNV. Higher VEGF concentration produces more active VEGF and a greater number of VEGF receptors in tip cells so that the larger chemotactic force experienced by the leading ECs favors type 2 CNV over type 1 CNV.

Our simulations suggest possible therapies based on using drugs to tinker with parameters controlling CNV outcomes. Anti-VEGF treatments are commonly used to stop angiogenesis and provide a temporary reprieve of exudative AMD [51]. Our simulations also corroborate that lowering VEGF production stops angiogenesis. According to our results, anti-Jagged antibodies [52,53] could have a similar effect inhibiting CNV in AMD. To this end, progress in robotic-assisted subretinal injections may provide a beneficial and standardized implementation of anti-angiogenic therapies [54]. The same end can be achieved by enforcing the adhesion properties of RPE cells to BM and among themselves. Promising experiments involve inhibition of the EMT transition to regenerate the RPE [29]. Surgical procedures include RPE and choroid transplantation when appropriate donors are available [55]. Current lines of ongoing experimental preclinical research aim to place implants to stimulate RPE and photoreceptors or replace their function [56–58], seed pluripotent stem cells to replace the lost RPE cells and photoreceptors [59,60], use gene addition therapies and genome editing to restore function to a non-functional or absent protein in the appropriate RPE signaling pathways, or to block function by knocking-down proteins [61] or repairing BM with biomaterials and growing RPE and photoreceptors over it [62]. Clearly, the lifetime of working implants will depend on that of their underlying devices, whereas transplants and stem cells may recover RPE cells and improve their lateral



and BM adhesion properties, and also recover photoreceptors. However, BM may continue its defective performance and AMD may reappear with time. Replacing BM, RPE cells and photoreceptors is a more drastic but perhaps longer lasting solution, if it works.

To allow for quantitative comparisons with experiments, our 2D model of angiogenesis in the retina needs to be extended in several directions to be made more realistic and to predict the evolution of wet AMD. The extension of the model to three-dimensional configurations is straightforward although it requires more computing power. To move toward later stages of the formation of an advancing vascular plexus, we need to add lumen formation and blood circulation to the model. These processes will allow us to tackle the concurrent sprouting and anastomosis on the front of the advancing vascular plexus and the pruning of poorly perfused sprouts on its back.

## 5. Conclusions

To conclude, we have proposed a cellular Potts model of wet AMD that accounts for the deterioration of Bruch's membrane, growing drusen deposits that turn on sources of VEGF in addition to those active near photoreceptors. Numerical simulations of the model show that choroid neovascularization mainly results from three causes: (i) impairment of the adhesion between retinal pigmentation epithelium cells, between these cells and Bruch's membrane and among endothelial cells; (ii) excess VEGF producing strong gradients thereof; (iii) excess Jagged production. Anti-VEGF and anti-Jagged treatments address (ii) and (iii) and could halt angiogenesis on a temporary basis, but do they not resolve the deterioration of Bruch's membrane, which produces AMD. While anti-VEGF treatments are standard for wet AMD [51], anti-Jagged drugs have been tried in cancer treatments and more research would be useful to ascertain their value for AMD [52,53]. Our numerical simulations suggest the need for further experiments to confirm our findings, sharpen and validate our AMD model. More drastic remedies to address cellular adhesion loss (i) are electrobiological implants replacing the function of RPE and photoreceptors [56–58], seeding pluripotential stem cells to replace the lost RPE and photoreceptor cells themselves [59,60], or replacing Bruch's membrane by an artificial biohybrid retina [62]. This research is still in its early preclinical stages and the related techniques are much more intrusive for aged patients. Experiments to quantify the adhesion of the new cells generated by pluripotent stem cells and their ability to stop angiogenesis would be needed. Our passive model of RPE cells could be replaced by a vertex model of the epithelium able to describe wound healing [63]. Including reversible EMT signaling pathways [30] in future models would be desirable and could bring about new therapies. Modeling and numerical simulation could thus be key to identifying the critical experiments that are most likely to improve our understanding of AMD and possible treatments.

**Supplementary Materials:** The following are available online at <https://www.mdpi.com/2227-9059/9/2/224/s1>.

**Author Contributions:** Conceptualization, L.L.B., M.C. and R.V.; methodology, L.L.B., M.C. and R.V.; software, R.V.; validation, L.L.B., M.C. and R.V.; formal analysis, L.L.B., M.C. and R.V.; investigation, L.L.B., M.C. and R.V.; resources, L.L.B., M.C.; data curation, R.V.; writing—original draft preparation, L.L.B.; writing—review and editing, L.L.B., M.C. and R.V.; visualization, R.V.; supervision, L.L.B.; project administration, L.L.B.; funding acquisition, L.L.B., M.C. All authors have read and agreed to the published version of the manuscript.

**Funding:** This research was funded by FEDER/Ministerio de Ciencia, Innovación y Universidades–Agencia Estatal de Investigación grant number MTM2017-84446-C2-2-R.

**Institutional Review Board Statement:** Not applicable.

**Informed Consent Statement:** Not applicable.

**Data Availability Statement:** Not applicable.

**Conflicts of Interest:** The authors declare no conflict of interest. The funders had no role in the design of the study; in the collection, analyses, or interpretation of data; in the writing of the manuscript, or in the decision to publish the results.

### Abbreviations

2D	Two Dimensional
AMD	Age-related Macular Degeneration
BM	Bruch's membrane
CNV	Choroid Neo Vascularization
CPM	Cellular Potts Model
EC	Endothelial Cell
ECM	Extra Cellular Matrix
EMT	Epithelial to Mesenchymal Transition
MC	Monte Carlo
MCTS	Monte Carlo Time Step
RPE	Retinal Pigmentation Epithelium
VEGF	Vessel Endothelial Growth Factor

### References

- Wong, W.L.; Su, X.; Li, X.; Cheung, C.M.G.; Klein, R.; Cheng, C.-Y.; Wong, T.Y. Global prevalence of age-related macular degeneration and disease burden projection for 2020 and 2040: A systematic review and meta-analysis. *Lancet Glob. Health* **2014**, *2*, 106–116. [[CrossRef](#)]
- Jonas, J.B. Comment. Global prevalence of age-related macular degeneration. *Lancet Glob. Health* **2014**, *2*, e65–e66. [[CrossRef](#)]
- Jager, R.D.; Mieler, W.F.; Miller, J.W. Age-related macular degeneration. *N. Engl. J. Med.* **2008**, *358*, 2606–2617. [[CrossRef](#)]
- Nivison-Smith, L.; Milston, R.; Madigan, M.; Kalloniatis, M. Age-Related Macular Degeneration: Linking Clinical Presentation to Pathology. *Optom. Vision Sci.* **2014**, *91*, 832–848. [[CrossRef](#)] [[PubMed](#)]
- Manjunath, V.; Taha, M.; Fujimoto, J.G.; Duker, J.S. Choroidal Thickness in Normal Eyes Measured Using Cirrus-HD Optical Coherence Tomography. *Am. J. Ophthalmol.* **2010**, *150*, 325–329.e1. [[CrossRef](#)] [[PubMed](#)]
- Coscas, G.; Lupidi, M.; Coscas, F. *Atlas of OCT: Angiography in AMD. Comparison with Multimodal Imaging*; Société Française de Retine, L'Europeenne d'Éditions: Paris, France, 2015.
- Laforest, T.; Künzi, M.; Kowalczyk, L.; Carpentras, D.; Behar-Cohen, F.; Moser, C. Transscleral optical phase imaging of the human retina. *Nat. Photonics* **2020**, *14*, 439–445. [[CrossRef](#)]
- Gariano, R.F.; Gardner, T.W. Retinal angiogenesis in development and disease. *Nature* **2005**, *438*, 960–966. [[CrossRef](#)]
- Fruttiger, M. Development of the retinal vasculature. *Angiogenesis* **2007**, *10*, 77–88. [[CrossRef](#)] [[PubMed](#)]
- Scott, A.; Powner, M.B.; Gandhi, P.; Clarkin, C.; Gutmann, D.H.; Johnson, R.S.; Ferrara, N.; Fruttiger, M. Astrocyte-Derived Vascular Endothelial Growth Factor Stabilizes Vessels in the Developing Retinal Vasculature. *PLoS ONE* **2010**, *5*, e11863. [[CrossRef](#)]
- Selvam, S.; Kumar, T.; Fruttiger, M. Retinal vasculature development in health and disease. *Prog. Retin. Eye Res.* **2018**, *63*, 1–19. [[CrossRef](#)]
- Carmeliet, P.F. Angiogenesis in life, disease and medicine. *Nature* **2005**, *438*, 932–936. [[CrossRef](#)]
- Carmeliet, P.; Tessier-Lavigne, M. Common mechanisms of nerve and blood vessel wiring. *Nature* **2005**, *436*, 193–200. [[CrossRef](#)]
- Carmeliet, P.; Jain, R.K. Molecular mechanisms and clinical applications of angiogenesis. *Nature* **2011**, *473*, 298–307. [[CrossRef](#)] [[PubMed](#)]
- Tonnesen, M.G.; Feng, X.; Clark, R.A. Angiogenesis in wound healing. *J. Investig. Dermatol. Symp. Proc.* **2000**, *5*, 40–46. [[CrossRef](#)]
- Figg, W.D.; Folkman, J. *Angiogenesis. An Integrative Approach from Science to Medicine*; Springer: Berlin/Heidelberg, Germany, 2008.
- Gerhardt, H.; Golding, M.; Fruttiger, M.; Ruhrberg, C.; Lundkvist, A.; Abramsson, A.; Jeltsch, M.; Mitchell, C.; Alitalo, K.; Shima, D.; et al. VEGF guides angiogenic sprouting utilizing endothelial tip cell filopodia. *J. Cell Biol.* **2003**, *161*, 1163–1177. [[CrossRef](#)] [[PubMed](#)]
- Hellström, M.; Phng, L.K.; Hofmann, J.J.; Wallgard, E.; Coultas, L.; Lindblom, P.; Alva, J.; Nilsson, A.-K.; Karlsson, L.; Gaiano, N.; et al. Dll4 signalling through Notch1 regulates formation of tip cells during angiogenesis. *Nature* **2007**, *445*, 776–780. [[CrossRef](#)]
- Jolly, M.K.; Boareto, M.; Lu, M.; Onuchic, J.N.; Clementi, C.; Ben-Jacob, E. Operating principles of Notch-Delta-Jagged module of cell-cell communication. *New J. Phys.* **2015**, *17*, 055021. [[CrossRef](#)]
- Page, D.J.; Thuret, R.; Venkatraman, L.; Takahashi, T.; Bentley, K.; Herbert, S.P. Positive Feedback Defines the Timing, Magnitude, and Robustness of Angiogenesis. *Cell Rep.* **2019**, *27*, 3139–3151. [[CrossRef](#)] [[PubMed](#)]
- Vega, R.; Carretero, M.; Travasso, R.D.M.; Bonilla, L.L. Notch signaling and taxis mechanisms regulate early stage angiogenesis: A mathematical and computational model. *PLoS Comput. Biol.* **2020**, *16*, e1006919. [[CrossRef](#)] [[PubMed](#)]
- Gebala, V.; Collins, R.; Geudens, I.; Phng, L.-K.; Gerhardt, H. Blood flow drives lumen formation by inverse membrane blebbing during angiogenesis in vivo. *Nat. Cell Biol.* **2016**, *18*, 443–450. [[CrossRef](#)]

23. Franco, C.A.; Jones, M.L.; Bernabeu, M.O.; Geudens, I.; Mathivet, T.; Rosa, A.; Lopes, F.M.; Lima, A.P.; Ragab, A.; Collins, R.T.; et al. Dynamic endothelial cell rearrangements drive developmental vessel regression. *PLoS Biol.* **2015**, *13*, e1002125.
24. Szymborska, A.; Gerhardt, H. Hold me, but not too tight—endothelial cell-cell junctions in angiogenesis. *Cold Spring Harb. Perspect. Biol.* **2018**, *10*, a029223. [[CrossRef](#)]
25. Dufraigne, J.; Funahashi, Y.; Kitajewski, J. Notch signaling regulates tumor angiogenesis by diverse mechanisms. *Oncogene* **2008**, *27*, 5132–5137. [[CrossRef](#)]
26. Booi, J.C.; Baas, D.C.; Beisekeeva, J.; Gorgels, T.G.M.F.; Bergen, A.A.B. The dynamic nature of Bruch’s membrane. *Prog. Ret. Eye Res.* **2010**, *29*, 1–18. [[CrossRef](#)]
27. Mammadzada, P.; Corredoira, P.M.; André, H. The role of hypoxia-inducible factors in neovascular age-related macular degeneration: A gene therapy perspective. *Cell. Mol. Life Sci.* **2020**, *77*, 819–833. [[CrossRef](#)] [[PubMed](#)]
28. Gehrs, K.M.; Anderson, D.H.; Johnson, L.V.; Hageman, G.S. Age-related macular degeneration—emerging pathogenetic and therapeutic concepts. *Ann. Med.* **2009**, *38*, 450–471. [[CrossRef](#)]
29. Radeke, M.J.; Radeke, C.M.; Shih, Y.-H.; Hu, J.; Bok, D.; Johnson, L.V.; Coffey, P.J. Restoration of mesenchymal retinal pigmented epithelial cells by TGF $\beta$  pathway inhibitors: Implications for age-related macular degeneration. *Genome Med.* **2015**, *7*, 58. [[CrossRef](#)]
30. Shu, D.Y.; Butcher, E.; Saint-Geniez, M. EMT and EndMT: Emerging Roles in Age-Related Macular Degeneration. *Int. J. Mol. Sci.* **2020**, *21*, 4271. [[CrossRef](#)]
31. Tamiya, S.; Liu, L.; Kaplan, H.J. Epithelial-mesenchymal transition and proliferation of retinal pigment epithelial cells initiated upon loss of cell-cell contact. *Investig. Ophthalmol. Vis. Sci.* **2010**, *51*, 2755–2763. [[CrossRef](#)]
32. Roberts, P.A.; Gaffney, E.A.; Luthert, P.J.; Foss, A.J.E.; Byrne, H.M. Mathematical and Computational Models of the Retina in Health, Development and Disease. *Prog. Retin. Eye Res.* **2016**, *53*, 48–69. [[CrossRef](#)]
33. Flower, R.W.; von Kerczek, C.; Zhu, L.; Eggleton, E.C.; Topoleski, L.D.T. Theoretical Investigation of the Role of Choriocapillaris Blood Flow in Treatment of Subfoveal Choroidal Neovascularization Associated With Age-related Macular Degeneration. *Am. J. Ophthalmol.* **2001**, *132*, 85–93. [[CrossRef](#)]
34. Davies, A.E.; Williams, R.L.; Lugano, G.; Pop, S.R.; Kearns, V.R. In vitro and computational modelling of drug delivery across the outer blood-retinal barrier. *Interface Focus* **2020**, *10*, 20190132. [[CrossRef](#)]
35. Shirinifard, A.; Glazier, J.A.; Swat, M.; Gens, J.S.; Family, F.; Jiang, Y.; Grossniklaus, H.E. Adhesion Failures Determine the Pattern of Choroidal Neovascularization in the Eye: A Computer Simulation Study. *PLoS Comput. Biol.* **2012**, *8*, e1002440. [[CrossRef](#)] [[PubMed](#)]
36. Graner, F.; Glazier, J.A. Simulation of Biological Cell Sorting Using a Two-Dimensional Extended Potts Model. *Phys. Rev. Lett.* **1992**, *69*, 2013–2016. [[CrossRef](#)]
37. Bauer, A.L.; Jackson, T.L.; Jiang, Y. A Cell-Based Model Exhibiting Branching and Anastomosis during Tumor-Induced Angiogenesis. *Biophys. J.* **2007**, *92*, 3105–3121. [[CrossRef](#)] [[PubMed](#)]
38. Van Oers, R.F.M.; Rens, E.G.; La Valley, D.J.; Reinhart-King, C.A.; Merks, R.M.H. Mechanical cell-matrix feedback explains pairwise and collective endothelial cell behavior in vitro. *PLoS Comput. Biol.* **2014**, *10*, e1003774. [[CrossRef](#)] [[PubMed](#)]
39. Boareto, M.; Jolly, M.K. Ben-Jacob, E.; Onuchic, J.N. Jagged mediates differences in normal and tumor angiogenesis by affecting tip-stalk fate decision. *Proc. Natl. Acad. Sci. USA* **2015**, *112*, E3836–E3844. [[CrossRef](#)] [[PubMed](#)]
40. Arima, S.; Nishiyama, K.; Ko, T.; Arima, Y.; Hakozaki, Y.; Sugihara, K.; Koseki, K.; Uchijima, H.; Kurihara, Y.; Kurihara, H. Angiogenic morphogenesis driven by dynamic and heterogeneous collective endothelial cell movement. *Development* **2011**, *138*, 4763–4776. [[CrossRef](#)]
41. Sugihara, K.; Nishiyama, K.; Fukuhara, S.; Uemura, A.; Arima, S.; Kobayashi, R.; Köhn-Luque, A.; Mochizuki, N.; Suda, T.; Ogawa, H.; et al. Autonomy and Non-autonomy of Angiogenic Cell Movements Revealed by Experiment-Driven Mathematical Modeling. *Cell Rep.* **2015**, *13*, 1814–1827. [[CrossRef](#)]
42. Mantzaris, N.V.; Webb, S.; Othmer, H.G. Mathematical modeling of tumor-induced angiogenesis. *J. Math. Biol.* **2004**, *49*, 111–187. [[CrossRef](#)]
43. Bai, H.X.; Mao, Y.; Shen, L.; Xu, X.L.; Gao, F.; Zhang, Z.B.; Li, B.; Jonas, J.B. Bruch’s membrane thickness in relationship to axial length. *PLoS ONE* **2017**, *12*, e0182080. [[CrossRef](#)]
44. Friberg, T.R.; Bilonick, R.A.; Peter Brennen, P. Is Drusen Area Really So Important? An Assessment of Risk of Conversion to Neovascular AMD Based on Computerized Measurements of Drusen. *Investig. Ophthalmology Vis. Sci.* **2012**, *53*, 1742–1751. [[CrossRef](#)] [[PubMed](#)]
45. Poh, S.; Tham, Y.; Chee, M.L.; Dai, W.; Majithia, S.; Soh, Z.D.; Fenwick, E.K.; Tao, Y.; Thakur, S.; Rim, T.H.; et al. Association between Macular Thickness Profiles and Visual Function in Healthy Eyes: The Singapore Epidemiology of Eye Diseases (SEED) Study. *Sci. Rep.* **2020**, *10*, 6142. [[CrossRef](#)] [[PubMed](#)]
46. Gullapalli, V.K.; Sugino, I.K.; Van Patten, Y.; Shah, S.; Zarbin, M.A. Impaired RPE survival on aged submacular human Bruch’s membrane. *Exp. Eye Res.* **2005**, *80*, 235–248. [[CrossRef](#)] [[PubMed](#)]
47. Imamura, Y.; Noda, S.; Hashizume, K.; Shinoda, K.; Yamaguchi, M.; Uchiyama, S.; Shimizu, T.; Mizushima, Y.; Shirasawa, T.; Tsubota, K. Drusen, choroidal neovascularization, and retinal pigment epithelium dysfunction in SOD1-deficient mice: A model of age-related macular degeneration. *Procs. Natl. Acad. Sci. USA* **2005**, *103*, 11282–11287. [[CrossRef](#)] [[PubMed](#)]

48. Simó, R.; Villarroel, M.; Corraliza, L.; Hernández, C.; Garcia-Ramírez, M. The retinal pigment epithelium: Something more than a constituent of the blood-retinal barrier—implications for the pathogenesis of diabetic retinopathy. *J. Biomed. Biotechnol.* **2010**, *2010*, 190724. [[CrossRef](#)]
49. Ramos, J.R.D.; Travasso, R.; Carvalho, J. Capillary network formation from dispersed endothelial cells: Influence of cell traction, cell adhesion, and extracellular matrix rigidity. *Phys. Rev. E* **2018**, *97*, 012408. [[CrossRef](#)]
50. Bhutto, I.A.; McLeod, D.S.; Hasegawa, T.; Kim, S.Y.; Merges, C.; Tong, P.; Luty, G.A. Pigment epithelium-derived factor (PEDF) and vascular endothelial growth factor (VEGF) in aged human choroid and eyes with age-related macular degeneration. *Exp. Eye Res.* **2006**, *82*, 99–110. [[CrossRef](#)]
51. Fogli, S.; Del Re, M.; Rofi, E.; Posarelli, C.; Figus, M.; Danesi, R. Clinical pharmacology of intravitreal anti-VEGF drugs. *Eye* **2018**, *32*, 1010–1020. [[CrossRef](#)]
52. West, J.W.; Sagert, J.G.; Bessette, P.H.; Lowman, H.B.; Stagliano, N.E.; Vasiljeva, O.; Menendez, E.-E.M. Anti-Jagged 1/Jagged 2 Cross-Reactive Antibodies, Activatable Anti-Jagged Antibodies and Methods of Use Thereof. U.S. Patent 10,301,380, 28 May 2019. Available online: <https://patents.google.com/patent/US9127053B2/en> (accessed on 17 December 2020).
53. Sierra, R.A.; Trillo-Tinoco, J.; Mohamed, E.; Yu, L.; Achyut, B.R.; Arbab, A.; Bradford, J.W.; Osborne, B.A.; Miele, L.; Rodriguez, P.C. Anti-Jagged immunotherapy inhibits MDSCs and overcomes tumor-induced tolerance. *Cancer Res.* **2017**, *77*, 5628–5638. [[CrossRef](#)]
54. Zhou, M.; Yu, Q.; Huang, K.; Mahov, S.; Eslami, A.; Maier, M.; Lohmann, C.P.; Navab, N.; Zapp, D.; Knoll, A.; et al. Towards Robotic-assisted Subretinal Injection: A Hybrid Parallel-Serial Robot System Design and Preliminary Evaluation. *IEEE Trans. Ind. Electron.* **2020**, *67*, 6617–6628. [[CrossRef](#)]
55. Parolini, B.; Nava, U.; Palmieri, M.; Lucente, A.; Finzi, A.; Frisina, R. RPE and Choroid Transplantation in Macular Degeneration. In *Macular Surgery*; Chang, A., Mieler, W.F., Ohji, M., Eds.; Springer Nature: Cham, Switzerland, 2020; pp. 401–422.
56. Cheng, D.L.; Greenberg, P.B.; Borton, D.A. Advances in retinal prosthetic research: A systematic review of engineering and clinical characteristics of current prosthetic initiatives. *Curr. Eye Res.* **2017**, *42*, 334–347. [[CrossRef](#)]
57. Maya-Vetencourt, J.F.; Ghezzi, D.; Antognazza, M.R.; Colombo, E.; Mete, M.; Feyen, P.; Desii, A.; Buschiazzi, A.; Di Paolo, M.; Di Marco, S.; et al. A fully organic retinal prosthesis restores vision in a rat model of degenerative blindness. *Nat. Mater.* **2017**, *16*, 681–689. [[CrossRef](#)] [[PubMed](#)]
58. Tang, J.; Qin, N.; Chong, Y.; Diao, Y.; Yiliguma; Wang, Z.; Xue, T.; Jiang, M.; Zhang, J.; Zheng, G. Nanowire arrays restore vision in blind mice. *Nat. Commun.* **2018**, *9*, 786. [[CrossRef](#)] [[PubMed](#)]
59. Gagliardi, G.; Ben M'Barek, K.; Goureau, O. Photoreceptor cell replacement in macular degeneration and retinitis pigmentosa: A pluripotent stem cell-based approach. *Prog. Ret. Eye Res.* **2019**, *71*, 1–25. [[CrossRef](#)]
60. Singh, M.S.; Park, S.S.; Albin, T.A.; Canto-Soler, M.V.; Klassen, H.; MacLaren, R.E.; Takahashi, M.; Nagiel, A.; Schwartz, S.D.; Bharti, K. Retinal stem cell transplantation: Balancing safety and potential. *Prog. Retin. Eye Res.* **2020**, *75*, 100779. [[CrossRef](#)] [[PubMed](#)]
61. Stieger, K.; Lorenz, B. RPE and gene therapy. In *Retinal Pigment Epithelium in Health and Disease*; Klettner, A.K., Dithmar, S., Eds.; Springer Nature: Cham, Switzerland, 2020; pp. 265–279.
62. Jemni-Damer, N.; Guedan-Duran, A.; Cichy, J.; Lozano-Picazo, P.; Gonzalez-Nieto, D.; Perez-Rigueiro, J.; Rojo, F.; Guinea, G.V.; Virtuoso, A.; Cirillo, G.; et al. First steps for the development of silk fibroin-based 3D biohybrid retina for age-related macular degeneration (AMD). *J. Neural Eng.* **2020**, *17*, 055003. [[CrossRef](#)]
63. Bonilla, L.L.; Carpio, A.; Trenado, C. Tracking collective cell motion by topological data analysis. *PLoS Comput. Biol.* **2020**, *16*, e1008407. [[CrossRef](#)]